

apaiser



THE CRUISE COLLECTION

ZEN OVAL BATH
'DIAMOND WHITE'



*Luxury, craftsmanship and
innovation lie at the core of every
apaiser piece*

Our mission is to design and bring to life with inherent value
a bathware range that inspires ritual bathing and
overrides the temptation to compromise

Maison APAISER

At apaiser, our mission is to craft beautiful bathware, so clients and designers may create luxurious, and unforgettable bathrooms. We have always believed that a tranquil private retreat elevates both our client's daily routine, and a guest's hotel experience. A super yacht, or cruise aboard a luxury ship, are merely a sea borne extension of our private holiday homes and opulent holidays. So why not craft bathware for perhaps the most resplendent and indulgent of bathroom spaces?

With this in mind, we created a lightweight building method which allowed us to reduce the weight of our handcrafted, sustainable, apaiserMARBLE® bathware. apaiserMARBLE® is our own, luxurious blend of repurposed marble and stone, sourced from the rich soils of the Australian Barossa Region. It is a composition of up to 90% reclaimed marble, combined with high quality resins merging the luxuriousness of marble with performance. Lighter than natural stone, it retains the sensual touch and feel of marble, whilst delivering superior strength, performance and stain resistance. Shaped by hand with absolute perfection by our master craftsmen, apaiser bathware exemplifies the best of nature, technology, and meticulous artisan craftsmanship.

BATH COUTURE BATH & VANITY

'GRAPHITE' & 'GLACIER'

The Jackalope Mornington Peninsula, Australia



BATH COUTURE VANITY

'DIAMOND WHITE'

Residences in Melbourne, Australia



Our APPROACH

Our commitment to environmentally sensitive production has been a core part of our brand DNA since our inception nearly 20 years ago. We manufacture our products in world class apaiser-owned ateliers in Southeast Asia, which meet the most fastidious standards and quality checks.

Our Bath Couture and Made-to-Measure services, give designers the ability to tailor-make bathware, perfectly suited to their client's needs and the more challenging, space-conscious bathrooms. Our experienced in-house designers have worked closely with designers and yacht builders alike in developing innovative solutions which integrate the aesthetics and quality of our luxury bathware and the specialised requirements of naval architecture.

At a GLANCE...

DESIGN WITH CONFIDENCE

Work with our experienced in-house design team to create bespoke pieces exclusively for your project. Bath Couture (custom design) and Made-to-Measure creations are our speciality.

MIND THE ENVIRONMENT

Each apaiser piece is handcrafted from our sustainable material, apaiserMARBLE® - a blend of repurposed marble and resins. Sustainably sourced raw ingredients, and environmentally sensitive production, have been our focus since the inception of apaiser. We continue to strive to further reduce our impact on the environment.

QUALITY AND PERFORMANCE

Our signature material is beautiful in appearance and touch, with excellent heat retention. It is durable and easy to maintain, clean, and repair. apaiserMARBLE is non-porous, stain, mould and bacteria resistant and lighter than natural stone. We craft bathware of the highest quality which is durable and long lasting. Our pieces are UPC certified (CSA B45.5-17/IAPMO Z124-2017) under IAPMO standards, and LEED compliant.

LIGHTWEIGHT AND SAFE

Our production technology significantly reduces weight and enhances the strength of our pieces in comparison to natural stone. Both the material and hand finishing process combine to create pieces which are naturally slip resistant. Additional safety features, such as integrated hand grabs can be incorporated for further peace of mind.

TRUSTED AND GLOBAL

We are a proud Australian brand, who has designed and crafted bathware for beautiful hotels, resorts and private residences all over the world for more than 20 years. Our team is stationed across the globe, working closely with designers everywhere. We can supply to any country, both directly or with the help of one of our local partners.

LUNAR FREESTANDING BASIN

'GLACIER'

Residence in Melbourne, Australia





Featured
PROJECTS



Anastasia

Anastasia is a 76 metre custom motor yacht built in 2008 by Oceanco. Her sweeping lines and cutting exterior are the work of Australian designer Sam Sorgiovanni, who also created the award-winning superyacht's lavish interior.

With a beam of 13.4 metres, she boasts extraordinary volumes of timeless styling, beautiful furnishings and sumptuous seating to create an elegant and comfortable atmosphere. Anastasia's sleek profile features six decks, a ten-seat cinema, fully equipped gym, deck jacuzzi, large custom tenders and touch-and-go heli deck. The interior layout sleeps up to 12 guests in 6 rooms, including a two-level owner's suite, and 20 professional crew to ensure a relaxed luxury yacht experience.

All bathrooms feature apaiser's custom designed baths, vanities and basins.



ANASTASIA
Oceanco, Netherlands



ANASTASIA
Oceanco, Netherlands



ANASTASIA
Oceanco, Netherlands



ANASTASIA
Oceanco, Netherlands





ANASTASIA
BATH COUTURE BATH
Oceanco, Netherlands



ANASTASIA
BATH COUTURE BATH & BASIN
Oceanco, Netherlands

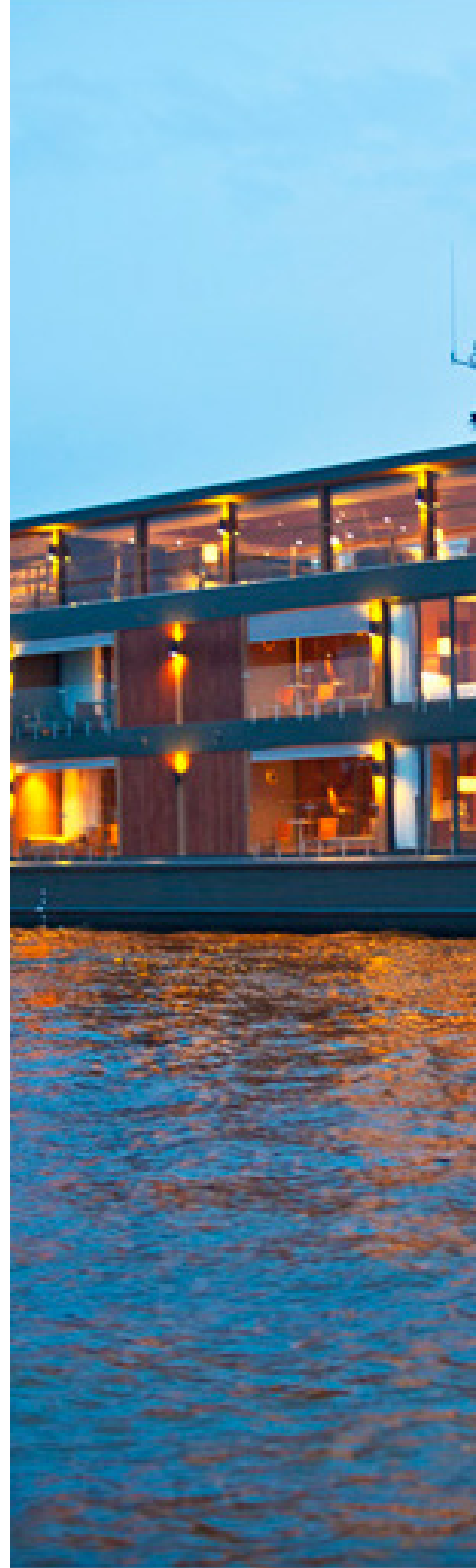


Aqua Mekong

Built in 2014, 62 metre Aqua Mekong charts a luxurious passage up and down the Mekong River between the Mekong Delta in Vietnam and the Kingdom of Cambodia. Designed by Saigon-based Noor Design, Aqua Expeditions' award-winning river cruise embodies the sophistication of a five star hotel.

This state-of-the-art river expedition vessel comfortably accommodates up to 40 guests in 20 designer suites, with a one-to-one staff-to-guest ratio for exceptional service. Social areas include indoor and outdoor bars, relaxed-yet-refined lounging and dining areas, a infinity plunge pool, outdoor movie theatre, screening room, observation deck, fitness centre, spa, library and boutique. With artisanal touches and interiors built entirely of local sustainable materials, the luxury expedition vessel is spacious and indulgent, yet intimate enough to feel entirely exclusive.

apaiser crafted bespoke vanities and shower bases for each of the 20 suites.



AQUA MEKONG
Triyards Shipyard, Vietnam



AQUA MEKONG



AQUA MEKONG
Triyards Shipyard, Vietnam



AQUA MEKONG
Triyards Shipyard, Vietnam



AQUA MEKONG
BATH COUTURE VANITY & SHOWER BASE
Triyards Shipyards, Vietnam

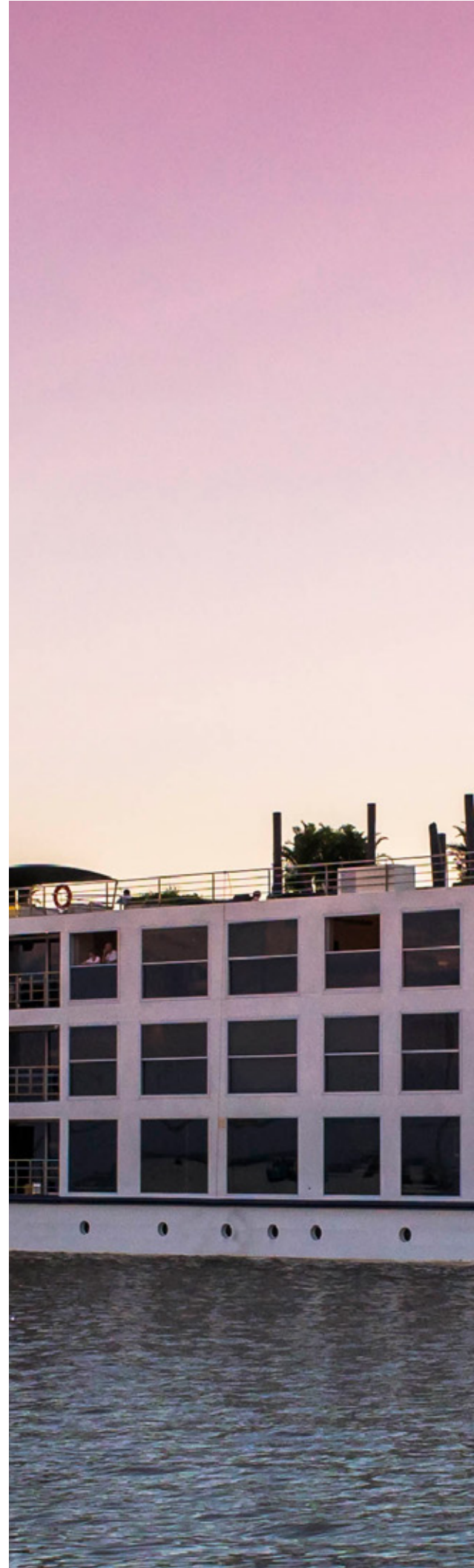


Scenic Spirit

Scenic Spirit is an 85 metre custom-built luxury river-ship designed specifically for Mekong River conditions, with European safety and technical standards. Offering maximum space and comfort for 68 guests in 34 one-bedroom balcony suites, the river cruise offers an almost 1:1 staff-to-guest ratio for personalised service.

The boutique ship with its refreshingly restrained and elegant Indochine-style interior, offers unrivalled amenities including five decks, a sleek pool, steam sauna, bar and open-air cinema. Journey the Mekong River through Vietnam, Cambodia and Laos for a unique Southeast Asia experience.

Scenic Spirit showcases custom designed apaiser baths, basins and vanities.





SCENIC SPIRIT
Scenic Tours, Australia



SCENIC SPIRIT
Scenic Tours, Australia



SCENIC SPIRIT
BATH COUTURE BATH
Scenic Tours, Australia



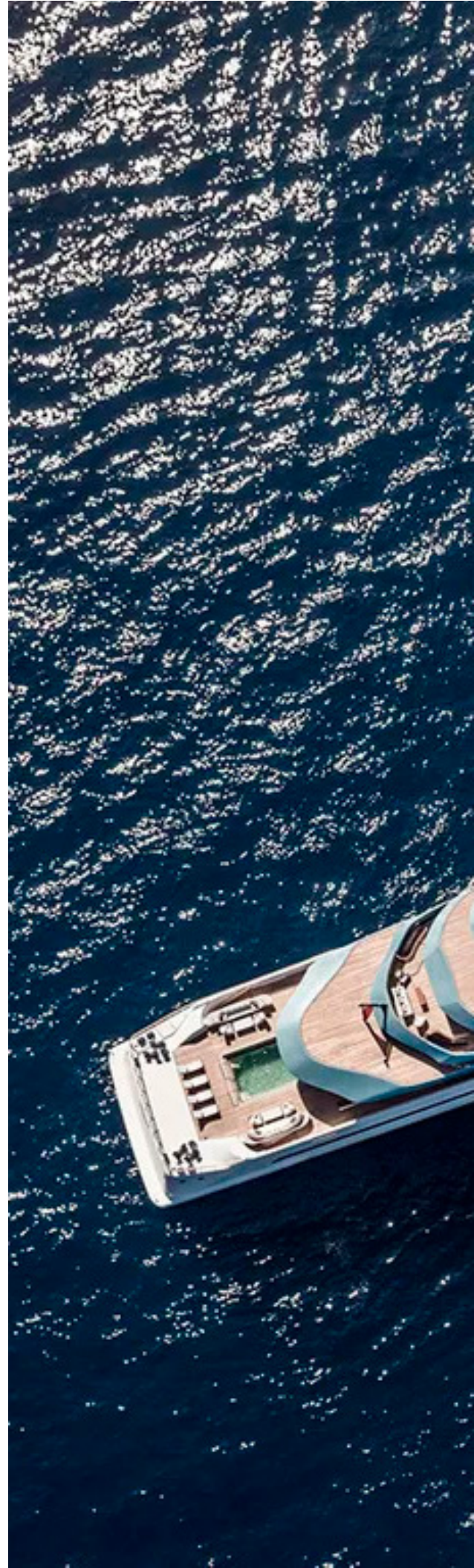


Jubilee

Launched in 2017, the Jubilee is a 110 metre custom motor yacht by Oceanco. Also known as Y714, the luxury mega yacht's exteriors were designed by Lobanov Design and luxurious interiors by Sam Sorgiovanni.

Jubilee features a displacement steel hull and aluminium superstructure, with teak decks. This vessel is also fitted with 'zero speed stabilizers' which work at anchor, increasing on-board comfort when the yacht is stationary, particularly in rough waters. Amenities include a gym, jacuzzi, glass lift (elevator), generous swimming pool and platform, tender garage and helipad. Accommodation is provided for a larger than usual amount of guests, with 30 guests across 15 staterooms.

apaiser bathware is featured throughout with bespoke baths, basins and vanities.





JUBILEE
Oceanco, Netherlands

JUBILEE
Oceanco, Netherlands



JUBILEE
Oceanco, Netherlands



JUBILEE
Oceanco, Netherlands



JUBILEE
BATH COUTURE BATH
Oceanco, Netherlands



M/Y White Rabbit

M/Y White Rabbit by Echo Yachts, Australia's largest superyacht builder, is a 84 metre trimaran superyacht that showcases the pinnacle of 100% custom design innovation and world-leading performance efficiency.

With exteriors and interiors by renowned designer Sam Sorgiovanni, the M/Y White Rabbit offers grand interior spaces, large entertaining decks, optimised energy efficiency and quiet operation with its diesel electric propulsion system. High levels of stability and ride comfort are integral to the hull design and are bolstered further by customised Naiad active motion control systems providing the ultimate in ocean-going comfort. With a maximum speed of 14.25 knots cruising at half loaded condition, M/Y White Rabbit has accommodation for 13 persons and 10 crew members.

apaiser's custom designed vanities feature throughout the grand vessel.



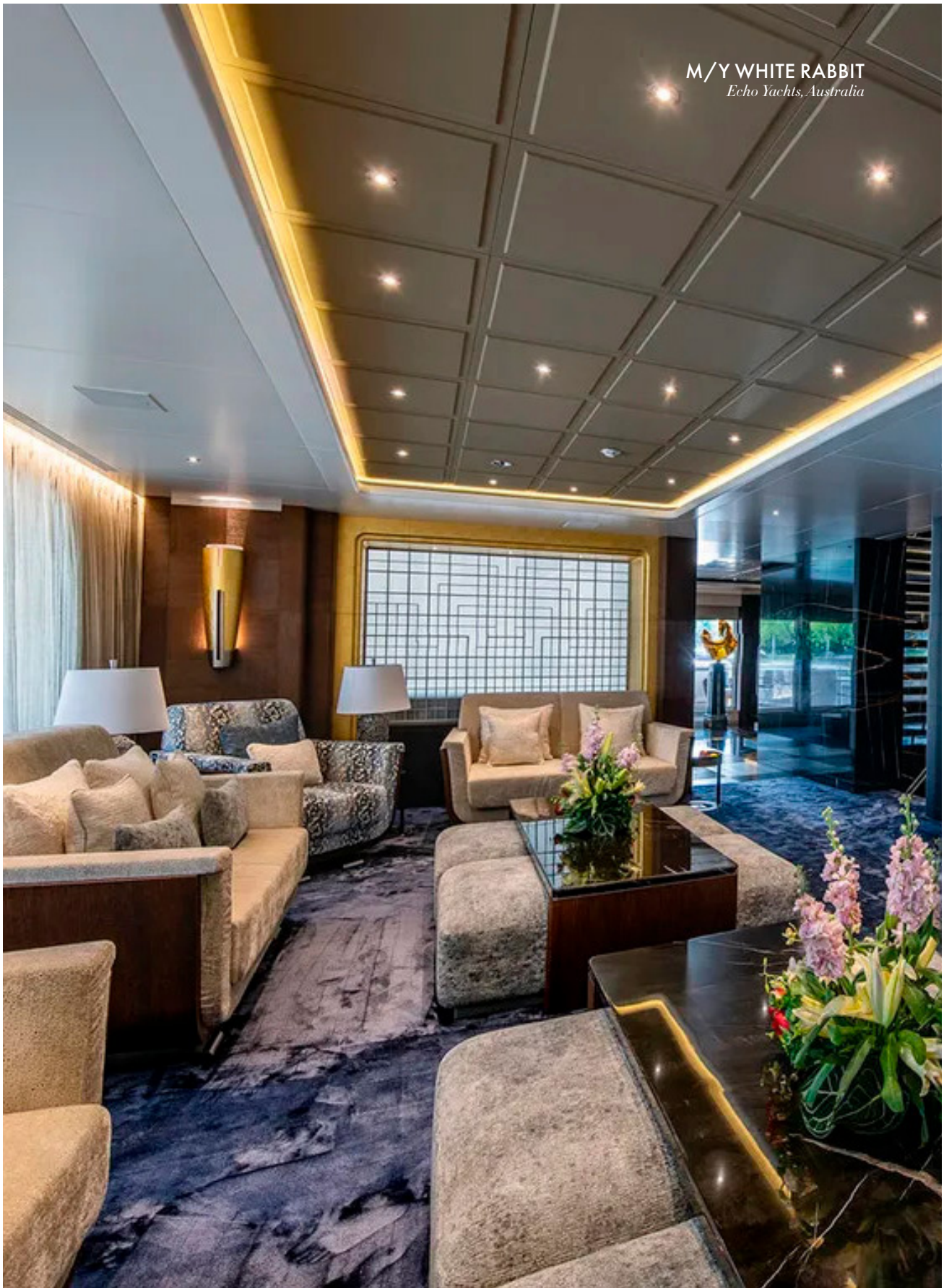
M/Y WHITE RABBIT
Echo Yachts, Australia



M/Y WHITE RABBIT
Echo Yachts, Australia



M/Y WHITE RABBIT
Echo Yachts, Australia



M/Y WHITE RABBIT
BATH COUTURE VANITY
Echo Yachts, Australia





Pearl 80

The Pearl 80 raises the bar for a luxury sport yacht with space, style and performance to spare. From the beautifully streamlined Bill Dixon exterior – complete with jet ski garage and hydraulic bathing platform – to the impressive open-plan interiors, every detail ensures that your life on the ocean is well and truly catered for.

Forgoing a formal dining area, the 24 metre luxury cruising boat has an impressive full-beam, open-plan salon with low profile furnishings so there's visibility from stem to stern. Deck spaces are conceived for outdoor entertaining and relaxing, and the yacht offers three areas for varying levels of alfresco dining. Other features include sunpads on the flybridge and the bow, a bar, grill, spa tub, transom garage and extensive specialised glazing and skylights to bathe spaces with light. Hitting a maximum speed of 35 knots, the Pearl 80 sleeps eight in four staterooms, and a crew of two.

**The guest bathrooms feature apaiser
Sublime basins.**



PEARL 80
Pearl Yachts, England



PEARL 80
Pearl Yachts, England



PEARL 80
Pearl Yachts, England



PEARL 80
SUBLIME BASIN
Pearl Yachts, England



PEARL 80
SUBLIME BASIN
Pearl Yachts, England

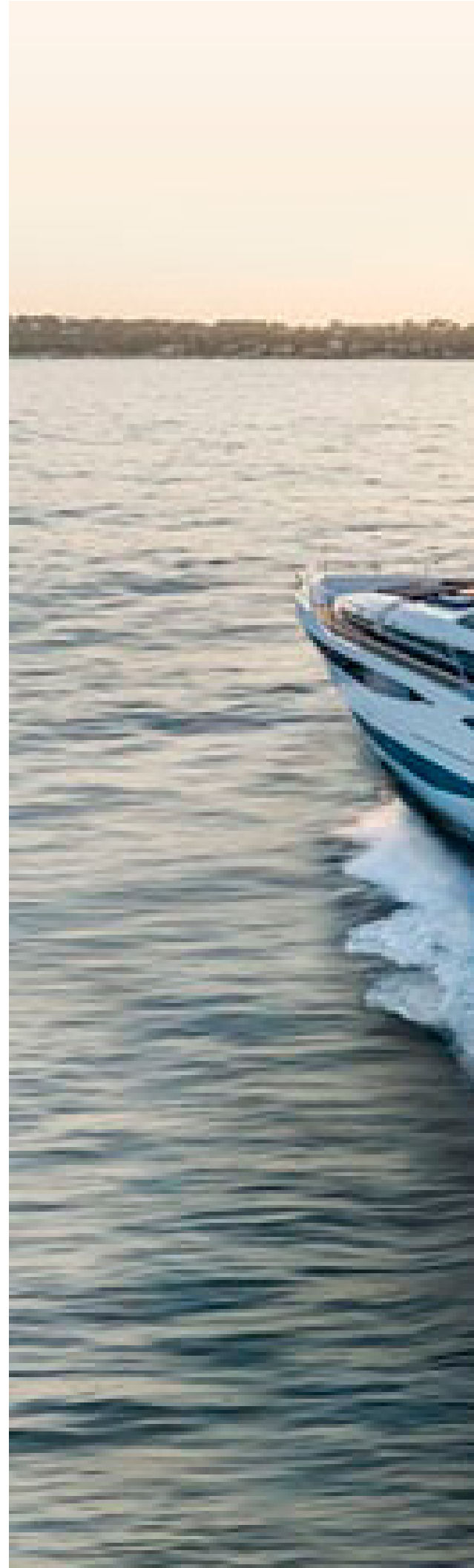


Pearl 95

The flagship 95 series takes the sporty ethos embedded in Pearl Yachts culture into a semi-raised pilothouse design, with an exterior by Dixon Yacht Design.

The largest model in the Pearl Yachts lineup, the Pearl 95 is designed to blur the boundaries between boat, sea and sky. Floor-to-ceiling windows and sliding doors allow incredible views, while clever touches such as glossy surfaces and white marble help reflect the light to create a bright and spacious-feeling interior. With well-appointed exterior decks, sunpads on the flybridge, a bar, jacuzzi, and a lounge and 8-seater dining area with retractable sunroof, the 29 metre yacht is perfect for entertaining al fresco. Not only is the Pearl 95 stylish, it's fast too. With a top speed of 28 knots and a cruising range of 380 nautical miles, the superyacht can sleep up to 10 guests in five en suite cabins and 5 crew members.

apaiser Lunar freestanding basins dress the ensuites.



PEARL 95
Pearl Yachts, England



PEARL 95
Pearl Yachts, England



PEARL 95
Pearl Yachts, England



PEARL 95
LUNAR FREESTANDING BASIN
Pearl Yachts, England



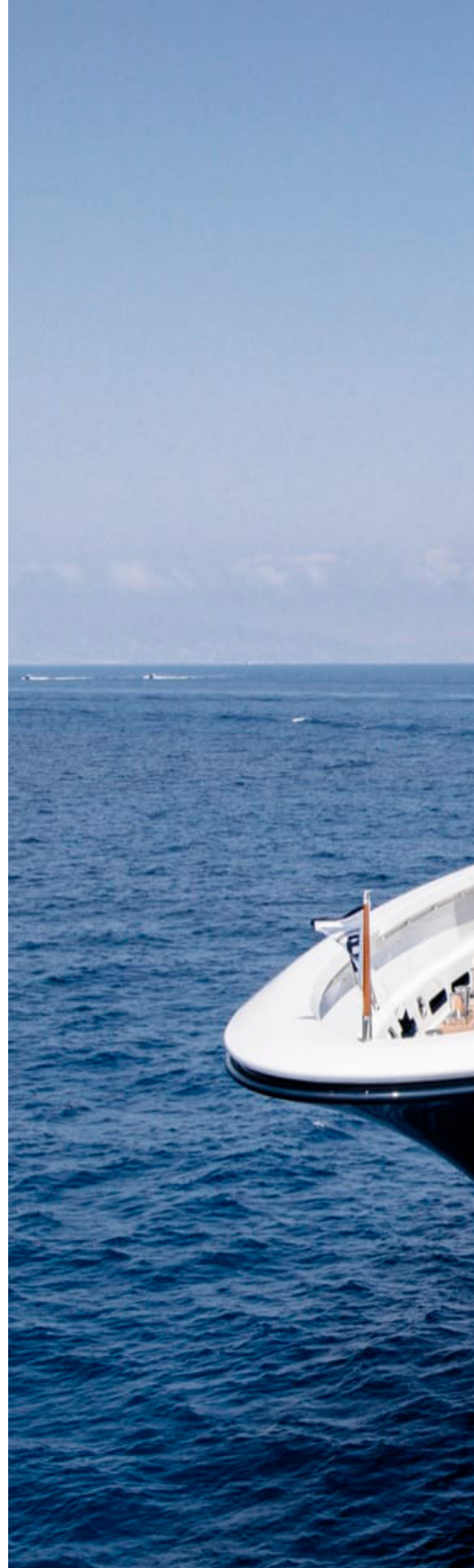


Barbara

Once known as Oceanco Y715, Oceanco's Barbara is a 88.5m motoryacht, with exterior styling and interior design by Sorgiovanni Design.

The sporty vessel's elliptical-shaped hull windows complement her organic curvilinear shape. Built for an experienced owner, the interior layout was created for specific items, such as being able to store a myriad of high-end sports equipment. A stunning ornamental element is the central stair column, where the glass elevator shaft is wrapped in a beautiful gnarled silvered root system, rising continuously through two decks. The accommodation includes a master suite, two VIP suites, and 4 additional guest staterooms. Modern and elegant, comfortable and classic, Sorgiovanni Designs has created a timeless yacht.

The bathrooms feature apaiser's custom designed baths.



BARBARA
Oceanco, Netherlands



BARBARA
Oceanco, Netherlands



BARBARA
Oceanco, Netherlands



BARBARA
Oceanco, Netherlands



BARBARA
Oceanco, Netherlands



BARBARA
Oceanco, Netherlands



BARBARA
Oceanco, Netherlands



Bravo Eugenia

The impressive mega yacht Project Bravo (Y718) is an outstanding 109m vessel, built by the prestigious Dutch manufacturer, Oceanco. The yacht features naval architecture by Lateral Naval Architect, while her exterior design is by Nuvolari-Lenard and interiors by Reymond Langton Design.

The optimised, long and slender hull is reminiscent of a sport yacht, resulting in a striking low profile. The elegant interiors are warm and inviting, where Reymond Langton worked with artisans and craftsmen to create bespoke artworks, fabrics and signature furniture pieces. Bravo Eugenia comes complete with two helicopter landing pads, a large tender garage, a wellness centre with sauna, steam room and plunge pool as well as a luxurious beach club with its own gym and movie theatre. It can accommodate up to 14 guests in 7 suites and has a crew of 30.

The hybrid superyacht features custom apaiser designed baths.



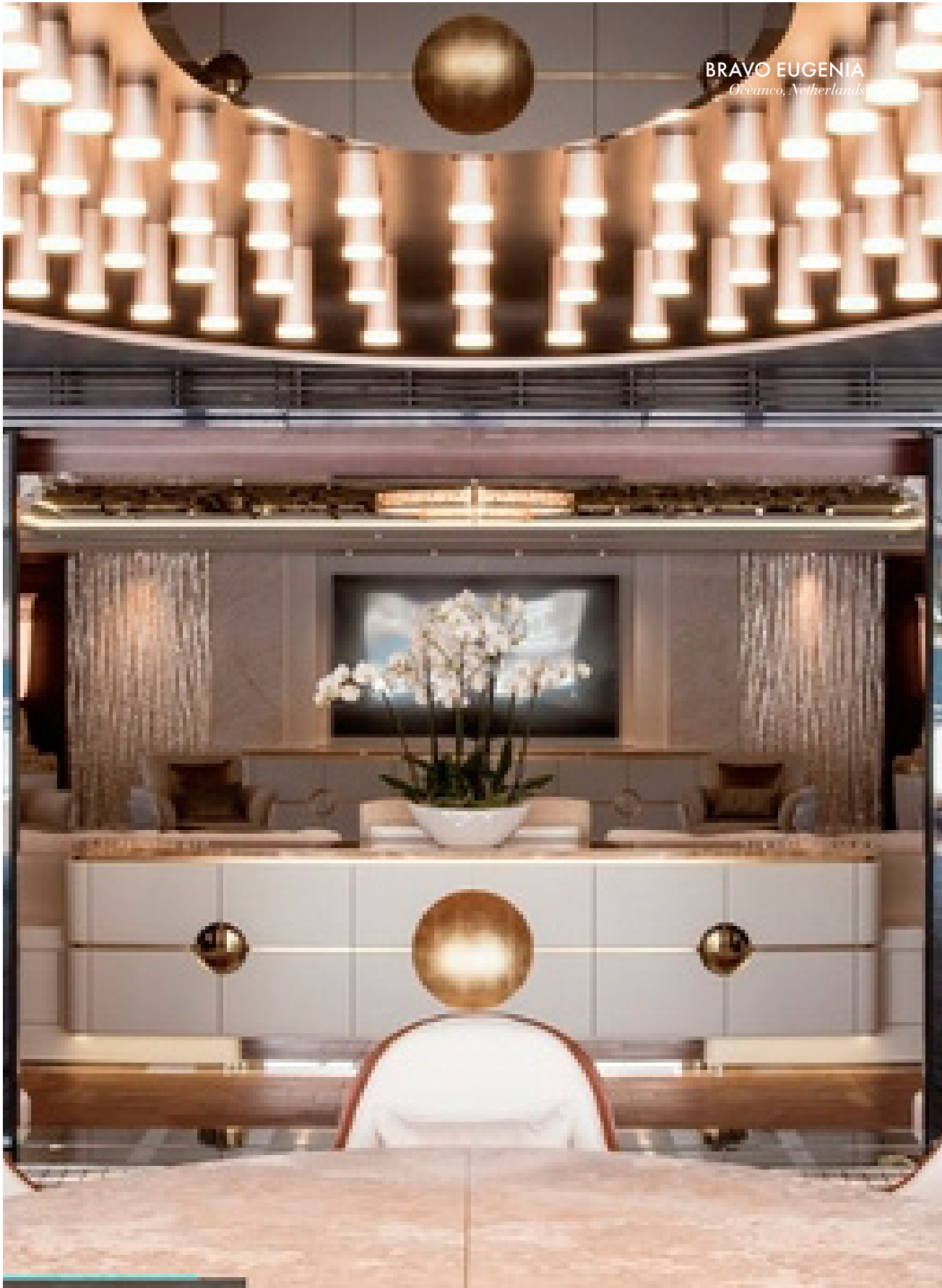
BRAVO EUGENIA
Oceanco, Netherlands



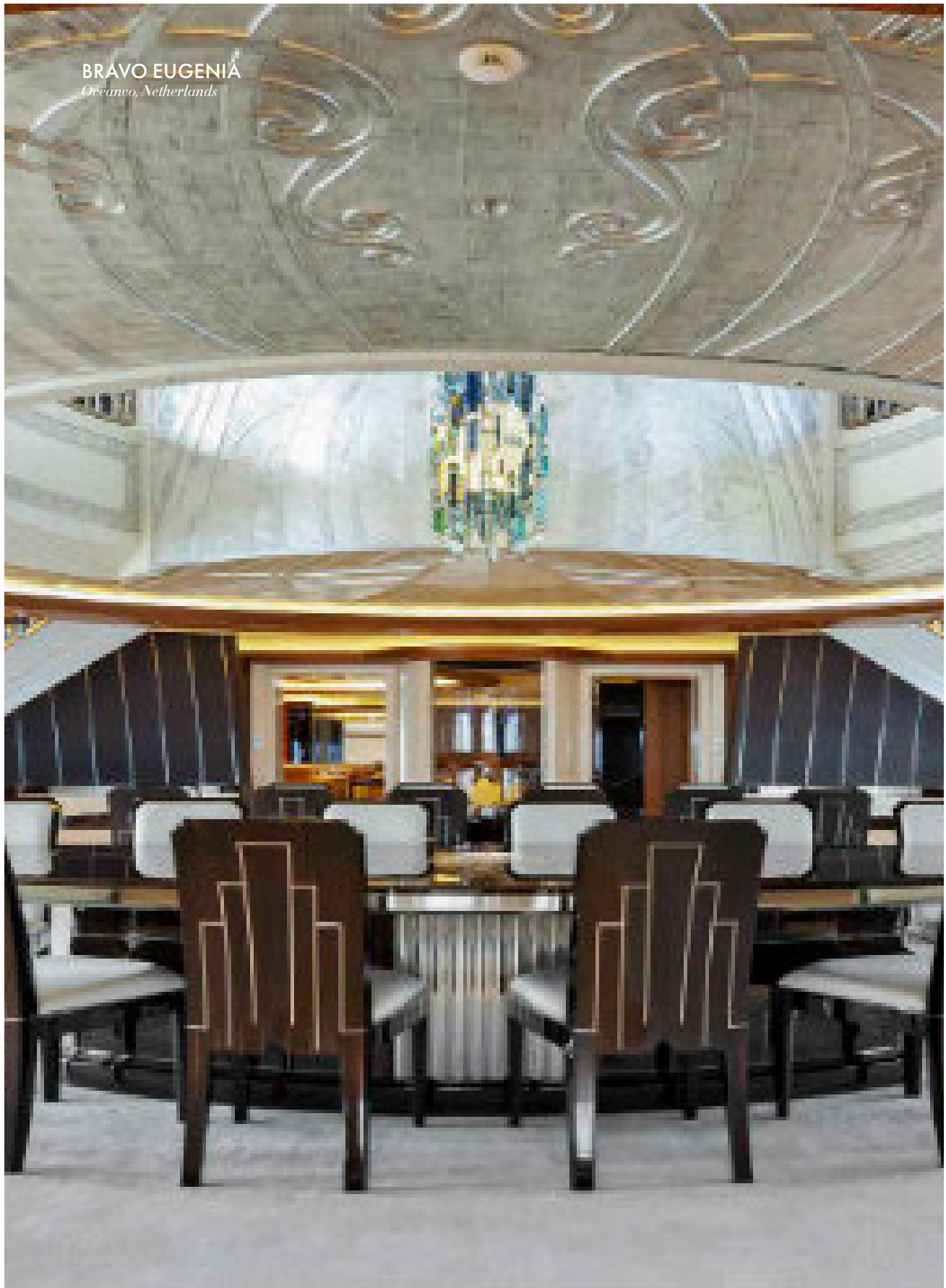
BRavo EUGENIA
Oceanco, Netherlands



BRAVO EUGENIA
Oceanco, Netherlands



BRAVO EUGENIA
Oceanco, Netherlands



BRAVO EUGENIA
Oceano, Netherlands



apaiser

apaiser.com

SHOWROOMS

MELBOURNE

344 Burnley Street
Richmond 3121
Victoria
Australia

SINGAPORE

40 Eng Hoon Street
169784
Singapore

SALES OFFICES

MELBOURNE – HQ

melbourne@apaiser.com
T +61 3 9421 5722

SINGAPORE

asia@apaiser.com
T +65 6223 2378

NEW YORK

usa@apaiser.com

DUBAI

mea@apaiser.com

LONDON

uk@apaiser.com

BANGKOK

info@apaiser.com

MARKETING

marketing@apaiser.com